

Firm Overview

Community of Legal Experts Contributing to Society

Jipyong was founded on April 3, 2000. It was the spirit and purpose of establishment of Jipyong to be a law firm committed to upholding the highest ethical and democratic standards, and to contributing to public welfare of society, while providing the best services and solutions with exceptional skills and devotion.

In 17 years since its incorporation, Jipyong grew to be a global law firm with 190 professionals including 180 lawyers and other professionals at 2 domestic offices and 9 overseas offices. It provides professional and comprehensive legal services in all areas including litigation & arbitration; M&A; corporate & cross-border; finance & securities, private equity funds; construction & real estate; antitrust & competition; labor & employment; bankruptcy & restructuring; tax; intellectual property; informational technology; resources, energy & infrastructure; health care & biomedical; entertainment & media; white collar criminal defense; maritime; family law; constitutional law; government contracts; legislative; international business; and North Korea. In particular, we have been strengthening international business in key jurisdictions around the world through our 9 overseas offices in China, Russia, Vietnam, Indonesia, Myanmar, Cambodia, Laos and Iran.

Some Korean law firms have an “ownership” governance structure, but most law firms operate as a “partnership” of partner lawyers. As a “partnership”, Jipyong is dedicated to being a “community of legal experts”. That is, Jipyong regards the relationship between its partners and associates as prospective partners, rather than merely an employment relationship.

Law firms cannot be exempt from social responsibility, as companies in present-day society endeavor to fulfill social responsibility and have sustainable management targets. In particular, law firms have heavier social responsibility as an organization of lawyers whose mission is to pursue social justice and protect human rights. We at Jipyong believe it our important mission to respect our members and interested parties, to walk together with the community and to make best efforts to realize social justice and human rights.

Jipyong Offices

SEOUL (HQ)

10F, KT&G Seodaemun Tower, 60 Chungjeong-ro Seodaemun-gu, Seoul 03740, Korea
Tel +82.2.6200.1600 Fax +82.6200.0800
Email master@jipyong.com

SUNCHEON

3F, Geumgang Tower, 24 Wangji-ro, Suncheon-si Jeollanam-do, 57932, Korea
Tel +82.61.724.2001 Fax +82.61.725.7604
Email suncheon@jipyong.com

BUSAN

#601, Jeongnim Bldg., 34 Beobwon-ro Yeonje-gu, Busan 47511, Korea
Tel +82.51.502.2008 Fax +82.51.502.2340
Email busan@jipyong.com

SHANGHAI

Room 2310, Shanghai Maxdo Center No.8 Xing Yi Road, Shanghai, China

HO CHI MINH CITY

#1605, Centec Tower, 72.74 Nguyen Thi Minh Khai St. Ward 6, Dist. 3, Ho Chi Minh City, Vietnam

HANOI

Suite 3505, 35F, Keangnam Hanoi Landmark Tower Plot E6, Cau Giay New Urban Area, Me Tri Ward Nam Tu Liem Dist., Hanoi, Vietnam

PHNOM PENH

9F, Phnom Penh Tower, #445, Monivong Blvd. (St.93/232), Sangkat Boeung Pralit, Khan 7 Makara Phnom Penh, Cambodia

VIENTIANE

LLC Bldg., Nongbone Road, Saysetha Dist. Vientiane, Laos

JAKARTA

Gedung Artha Graha 23F, Jalan Jenderal Sudirman Kav. 52.53, Lot 25, Jakarta Selatan 12190, Indonesia

YANGON

No. 140/A, Than Lwin Road, Bahan Township Yangon, Myanmar

MOSCOW

119002, 43, Sivtsev Vrazhek Lane, Moscow, Russia

TEHRAN

3F, No. 148, Dast Gerdi St. (former Zafar St.) Shariati St., Tehran, Iran

DUBAI (ATTORNEY DISPATCHED)

Dubai Office, Pinsent Masons LLP, Level 8 The Offices 1, (adjacent to the Dubai World Trade Centre), One Central, PO Box 115580, Dubai United Arab Emirates

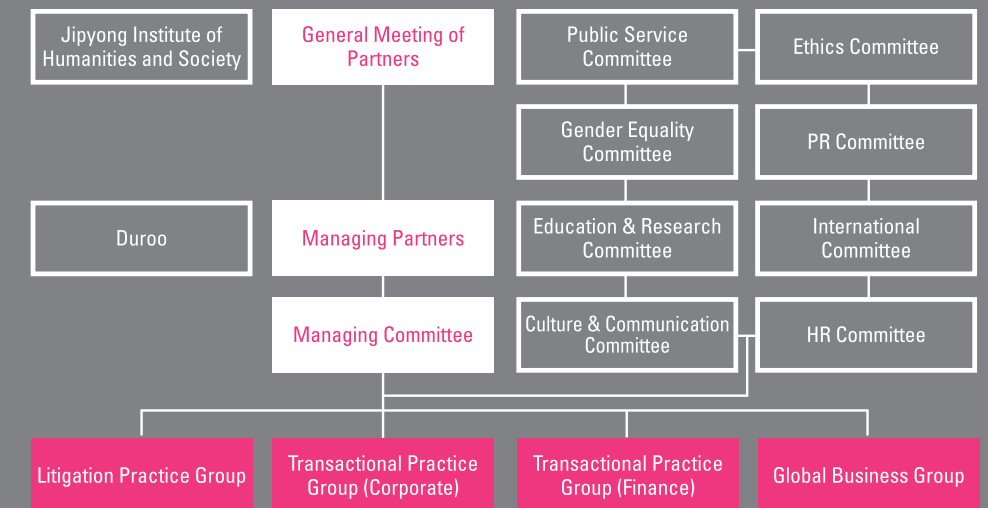


Organizational System and Governance Structure

The most important decision-making organization of Jipyong is the general meeting of partners, which makes major decisions including appointment of the Managing Partners and the Managing Committee members. The Managing Partners and the Managing Committee (equivalent to the board of directors of a company) represent Jipyong and are responsible for management (Kong-Hyun Lee and Young-Tae Yang are the Managing Partners; and Young-Tae Yang, Sang-Jun Kim, Young-Joo Park, Gee-Hong Kim and Haeng-Gyu Lee have served as the Managing Committee members in 2016). We stress democratic operation of the law firm and place great importance on the sense of ownership and spontaneity in all members including partners, associates and staff. The opinion of the Associates and staff are reflected actively in the management of Jipyong.

Jipyong is largely divided into the Litigation Practice Group, Transactional Practice Group and Global Business Group. We also have various expert teams depending on their expertise beyond the practice groups. In addition to the expert teams, the Future Industry Law Society was organized in 2016 to research and study the laws related to future industries such as artificial intelligence and autonomous vehicles.

Jipyong established Duroo, a public interest corporation, to help fulfill the social responsibility, and as of 2016, we have 4 full-time pro bono attorneys at Duroo. Furthermore, we also established Jipyong Institute of Humanities and Society in the belief that the legal system can stand upright only on the foundation of humanities.



Real Estate & Construction / Finance & Securities / M&A · Corporate / Antitrust & Competition / Labor & Employment / IP · IT / White Collar Criminal Defense / Maritime / Constitutional Law · Administrative Law / Family Law / Tax / Legislative / Ethics & Management Support / Cross-Border Consulting / International Arbitration & Dispute Resolution / Bankruptcy · Rehabilitation · Restructuring / Medium and Small-Sized Enterprise / Energy · Resources · Infrastructure / Maritime / Bio · Pharmaceutical · Health Care / Future Industry Law Society / Elderlaw Practice Study Society / PF Projects Normalization Center

China / Russia · Central Asia · Mongolia / Vietnam / Cambodia · Laos · Thailand / Indonesia / Myanmar / Iran · Middle East / Japan / North Korea / Philippines / Singapore · Malaysia / India / Central · South America / UK · Germany · Europe / USA / Africa / Australia · New Zealand